

EXURO

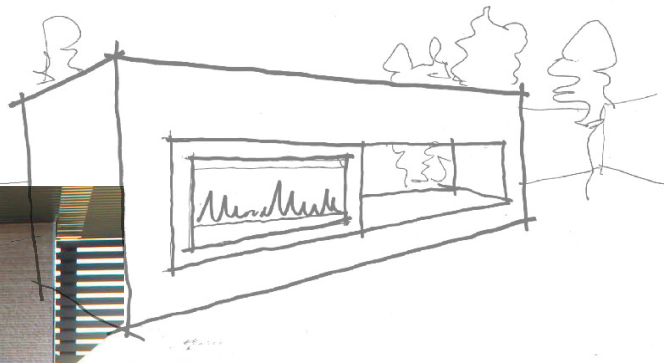




EXURO

BRING SOME HEAT AND AMBIENCE TO THE PARTY

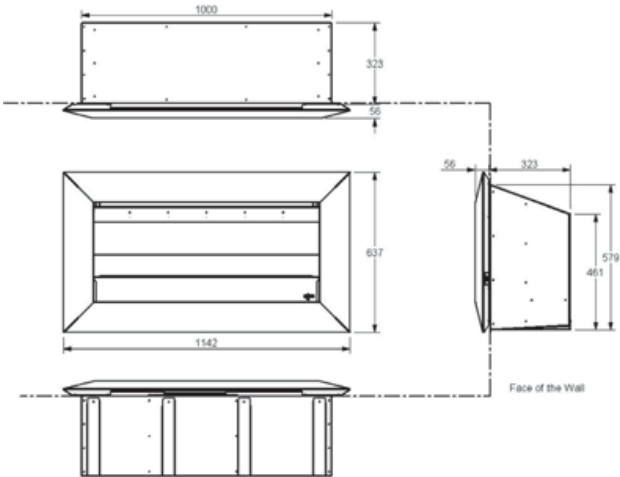
The Exuro will not only look great in your alfresco or outdoor entertaining area, but it will also bring some warmth to the party. With its sleek looks and optional black or stainless steel bevelled trims it is sure to impress your guests. The Exuro can be built into any environment to suit the surrounding finishes and as it doesn't need a flue there are virtually no boundaries when looking for the ideal location for installation



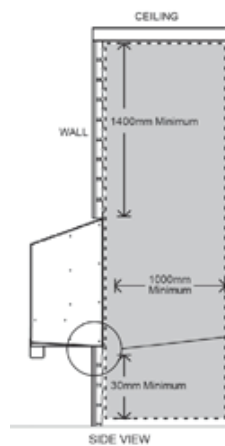
Outdoor Heating
Modern or Contemporary
New Application
No Flue Required
Natural Gas or LPG
Black pebble
Black or Stainless surround
Electronic Ignition

EXURO

1.1 Product dimensions: (mm)

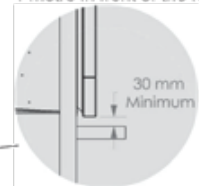


Clearances to combustibles:



Minimum clearance distance between a combustible ceiling and the fascia must be no less than 1400mm.

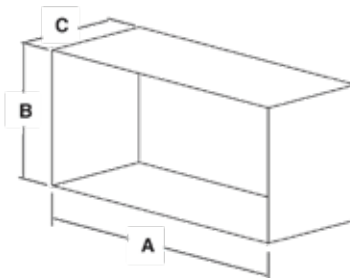
Warning: Under no circumstances should any object such as people, pets, furniture, etc. be closer than 1 metre in front of the IO1000.



Warning: Do not install a TV above this fire under any circumstances.

Cavity Dimensions:

Minimum Cavity Dimensions		
A	B	C
1010 mm	585 mm	330 mm



WARRANTY

Firebox: 15 Years Components: 2 Years

VISIT WWW.REALFLAME.COM.AU FOR MORE TECHNICAL INFORMATION.

