



MAISON
FIREPLACES



FIRES FOR DREAM HOMES



FIRES FOR DREAM HOMES

Apart from great products, we offer clients our in-depth knowledge, craftsman-like expertise and an inspiring range of finished projects to help you achieve your dream fireplace.

We are your one stop specialist centre for anything to do with the best and latest fireplace inserts and installation technology.

Maison Fireplaces heating systems are unparalleled in design, heating performance, efficiency, ease of operation and product versatility.

Our fireplaces provide warmth, ambience and a comforting focal point in many Australian homes.



ARLBERG 780 SERIES

ARLBERG

Competitively priced yet a powerful performer boasting premium looks and cutting edge technology, this fireplace's large glass area provides a calming ambience when viewing the fire.

ARLBERG TUNNEL

Desirable double sided design with standard side door opening system. Great performance and easy installation.

ARLBERG CASSETTE (Eco - green sign)

Perfect for installation in energy efficient houses and to retrofit in open fireplaces.

Easy operation, low wood consumption, optimised heating performance.

ARLBERG CORNER & THREE SIDED GLASS-DOOR (by special order)

Designer fireplace models for special effect installations.

RECOMMENDED INSTALLATION SYSTEMS

Natural convection, hot air transfer, heat storage system, hydronic central heating.

| | |
|---------------------------------|----------------------------|
| Door dimensions (w h) | 740 / 480 mm |
| Overall dimensions (w h d)* | 780 / 1320 - 1450 / 535 mm |
| Weight* | 185 - 300 kg |
| Flue outlet | 8 inch |
| Air supply duct | 1 x 125 mm |
| Minimum hearth dimensions (w d) | 1100 mm / 550 mm |
| Log length /diameter | 50 cm / 35 cm |
| Average wood consumption | 4 kg / hour |
| Average efficiency EU | 80% |
| Nominal heat output | 13 kW |
| Maximum heat output | 25 kW |
| Door opening system | Side, Lift |

* Due to the model variations within each series these dimensions and weights are indicative. Please refer to a technical sheet of an individual model for more accurate weights and measurements.

GLASS-DOOR CONFIGURATIONS



ARLBERG



ARLBERG TUNNEL



ARLBERG CASSETTE



ARLBERG CORNER GLASS



ARLBERG TRIPPLE-SIDED GLASS





MT BLANC 970 SERIES

MT BLANC VD (vertical lift door)

The flagship of our range, this fireplace has a large door/glass area and popular vertical opening door. High heating performance, optimised dimensions, smart design and technology ideal for many applications.

MT BLANC SD (side opening door)

Same as Mt Blanc VD, only with swing door and attractive price tag.

MT BLANC TUNNEL

Highly sought after model, double sided version of the ever popular Mt Blanc.

MT BLANC AQUA-TECH

Special application model for hydronic central heating installation. Huge space and water heating capacity, this fireplace represents the pinnacle in heating technology.

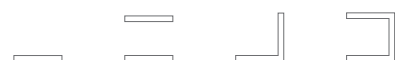
RECOMMENDED INSTALLATION SYSTEMS

Natural convection, hot air transfer, heat storage system, hydronic central heating.

| | |
|---------------------------------|----------------------------|
| Door dimensions (w h) | 860 / 480 mm |
| Overall dimensions (w h d)* TBC | 970 / 1320 - 1550 / 535 mm |
| Weight* | 185 - 330 kg |
| Flue outlet | 8 inch |
| Air supply duct | 1 x 125 mm |
| Minimum hearth dimensions (w d) | 1300 mm / 650 mm |
| Log length /diameter | 55 cm / 40 cm |
| Average wood consumption | 4.5 kg / hour |
| Average efficiency EU | 80% |
| Nominal heat output | 15 kW |
| Maximum heat output | 25 kW |
| Door opening system | Side, Lift |

* Due to the model variations within each series these dimensions and weights are indicative. Please refer to a technical sheet of an individual model for more accurate weights and measurements.

GLASS-DOOR CONFIGURATIONS



MT BLANC VD (vertical door)



MT BLANC SD (side opening door)



MT BLANC TUNNEL 1xVD, 1xSD



MT BLANC AQUA-TECH SD



MT BLANC CORNER GLASS



Special order

MT BLANC TRIPPLE-SIDED GLASS



Special order



MT BLANC PANORAMA 1170 SERIES

MT BLANC PANORAMA 1170

Architecturally-styled fireplace with excellent heating characteristics. Vertical door for easy and elegant operation.

MT BLANC PANORAMA 1170 TUNNEL

Extra large glass areas for unlimited view of the fire. 1x vertical door (VD) 1x standard door (SD) for practical operation and seamless installation.

MT BLANC PANORAMA 1170 TUNNEL ALFRESCO

Especially designed tunnel unit for indoor/outdoor style installations. Cutting edge technology ensures most of the heat is directed inwards, outside surfaces are weather proofed and equipped with lock mechanism.

RECOMMENDED INSTALLATION SYSTEMS

Natural convection, hot air transfer, heat storage system.

| | |
|---------------------------------|----------------------|
| Door dimensions (w h) | 1060 / 480 mm |
| Overall dimensions (w h d)* | 1170 / 1500 / 545 mm |
| Weight* | 325 - 390 kg |
| Flue outlet | 9 inch |
| Air supply duct | 1 x 150 mm |
| Minimum hearth dimensions (w d) | 1500 mm / 750 mm |
| Log length /diameter | 60 cm / 45 cm |
| Average wood consumption | 5 kg / hour |
| Average efficiency EU | 80% |
| Nominal heat output | 16 kW |
| Maximum heat output | 30 kW |
| Door opening system | Lift |

* Due to the model variations within each series these dimensions and weights are indicative. Please refer to a technical sheet of an individual model for more accurate weights and measurements.

GLASS-DOOR CONFIGURATIONS



MT BLANC PANORAMA



MT BLANC PANORAMA TUNNEL



MT BLANC PANORAMA ALFRESCO
For indoor/alfresco installation - outdoor paint





MT BLANC GRAND SERIES 1370 & 1570

MT BLANC GRAND 1370 & 1570

Totally unique fireplace inserts grand in design, size and construction.

Impressive heat output, yet clean efficient combustion and unparalleled ambience.

Suitable for large spaces or special effect applications.

RECOMMENDED INSTALLATION SYSTEMS

Natural convection, hot air transfer.

| | |
|---------------------------------|-----------------------------|
| Door dimensions (w h) | 1260, 1460 / 480 mm |
| Overall dimensions (w h d)* | 1370 - 1570 / 1500 / 545 mm |
| Weight* | 440 kg |
| Flue outlet (1370 / 1570) | 9 inch / 10 inch |
| Air supply duct | 2 x 125 mm |
| Minimum hearth dimensions (w d) | 1800 mm / 850 mm |
| Log length / diameter | 60 cm / 45 cm |
| Average wood consumption | 6 kg / hour |
| Average efficiency EU | 80% |
| Nominal heat output | 18 kW |
| Maximum heat output | 35 kW |
| Door opening system | Lift |

* Due to the model variations within each series these dimensions and weights are indicative. Please refer to a technical sheet of an individual model for more accurate weights and measurements.

GLASS-DOOR CONFIGURATIONS

MT BLANC 1370 GRAND DESIGN - Vertical door



MT BLANC1570 GRAND DESIGN - Vertical Door





TATRA SERIES

This vertically styled fireplace is one of its kind, not to be found anywhere else in Australia. Crystal clean combustion combined with tall burning flames create a totally unique effect and comforting experience. It lends itself to a variety of designs and applications. Can be installed as a free standing large volume, high capacity designer fireplace.

RECOMMENDED INSTALLATION SYSTEMS

Natural convection, hot air transfer, heat storage system, free standing designs.



Optional free standing design.

| | |
|---------------------------------|---------------------|
| Door dimensions (w h) | 510 / 750 mm |
| Overall dimensions (w h d)* | 550 / 1370 / 505 mm |
| Weight* | 210 kg |
| Flue outlet | 8 inch |
| Air supply duct | 1 x 125 mm |
| Minimum hearth dimensions (w d) | 800 mm / 650 mm |
| Log length / diameter | 40 cm / 35 cm |
| Average wood consumption | 4 kg / hour |
| Average efficiency EU | 79% |
| Nominal heat output | 13 kW |
| Maximum heat output | 25 kW |
| Door opening system | Side |

* Due to the model variations within each series these dimensions and weights are indicative. Please refer to a technical sheet of an individual model for more accurate weights and measurements.

GLASS-DOOR CONFIGURATIONS





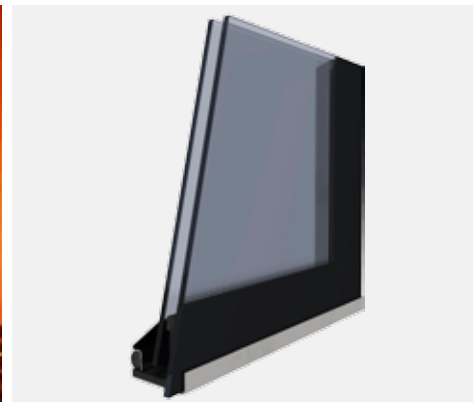
KEY FEATURES & TECHNOLOGY

5 YEAR/1 YEAR WARRANTY
 5 YEARS (STEEL CASING) / 1 YEAR CONSUMABLES
 (SEALS, VERMICULITE, CAST IRON GRATE, ASH PAN)

Thermodynamic firebox with latest rib lining.

Clean combustion. Smoke-free chimney.

Optional double glazing.



senotherm® UHT-HYDRO
 Revolutionary non-smoking paint.
 No odours or harmful chemicals.

Number of glazing options.
 Single, double, triple, quad.

Rear loading door option.



KOBOK fireplace inserts are coated with ecological paint Senotherm® UHT-HYDRO Worldwide unique, entirely water-based, extremely hard surface, smoke/odour free on first use.

WEILBURGER, GERMAN TECHNOLOGY



SLOVAKIA, EUROPEAN UNION

BEAUTIFULLY BUILT BY

Provision for connection of combustion air from the exterior.

One handle air regulator and cast iron grate.

Heat bank options.



Aqua-tech system.
 Fireplaces equipped with hot water exchanger.

Optional gold or stainless steel finish.

Optimised for Australian wood and burning conditions.



SKAMOTEC 225 Enclosure - Natural Convection System

WHEN YOU WANT A QUALITY SYSTEM

Practical for installation into existing open fireplaces. Also great choice for energy efficient or passive buildings SKAMOTEC 225 is a high heat resistance calcium silicate board with several advantages.



Quartz-free composition



No hazardous particles released during processing



CE and A1 certified.
100 % non-combustible material



Easy and fast processing and installation



BUILDING BOARDS FOR FIREPLACE ENCLOSURES

SKAMOTEC 225 is a lightweight non-combustible board with an excellent R-value, high mechanical strength and low thermal conductivity ideally suited for building fireplace enclosures.

THE ADVANTAGE OF SKAMOTEC 225

It eliminates the use of traditional frame construction, making it easier and faster to install, for labour-saving efficiency.

PERFORMANCE BENEFITS

- Non-combustible (class A1)
- Excellent insulation value
- Ease of installation; lightweight and rigid
- Easy to shape with ordinary woodworking tools
- Ideal for renovation additions and new construction
- Environmentally friendly

THE PERFECT PARTNERS FOR SKAMOTEC 225

The perfect partners to our innovative SKAMOTEC 225 building boards are the SKAMOTEC EASYMIX and SKAMOLEX™ GLUE.

SKAMOTEC EASYMIX is a fast curing cement and fibre based lightweight universal mortar for jointing, filling and surface finishing that requires only the addition of water.

- It has a particularly good workability
- It hardens faster than other similar products
- Easy to install on SKAMOTEC 225

SKAMOLEX™ GLUE is a water-borne adhesion to porous surfaces. It is inorganic and non-cementitious and is used for mounting of SKAMOTEC 225 fireplace building boards.



AKUMOL Enclosure - Heat Storage System

AKUMOL - OPTIMAL CHOICE FOR HEAT STORAGE FIREPLACE ENCLOSURE SYSTEMS

AKUMOL is a refractory building material especially developed for construction of heat retaining fireplace enclosures, ovens and cooking appliances.

It boasts special thermal properties which result in optimised transfer and retention of heat over a long period of time.

FEATURES

- Safe non toxic composition
- High thermal conductivity
- Excellent heat storing properties
- Tough dust free surface
- Optimized for heat tolerant render finishes
- Extremely tough, long lasting fireplace enclosures

APPLICATIONS

Excellent thermal properties of Akumol make it a material of choice for construction of fireplace enclosures, ovens and other structures exposed to heat.

Large choice of profiles allow for freedom of design and ease of construction while maintaining high structural integrity. Heat tolerant, high bond mortar (Rudomal) is used for joining the bricks, (Brulla White) render for finishing the enclosure.

AKUMOL PROFILES

- Akumol Slab 500x250x40mm
- Akumol Slab Ledge 500x250x40mm
- Akumol Slab Corner 125x250x250x40mm
- Akumol Slab Corner Ledge 125x 250x250x40mm
- Akumol Ledge Filler Plate 220x110x25mm
- Akumol ¼ circle R350/250

THE PERFECT PARTNERS FOR AKUMOL REFRACTORY BRICKS

- Akumol refractory bricks
- Rudomal 1100 high bond mortar
- Hurdis board
- Brulla heat conductive render





BUILDING MATERIALS

HIGH TEMPERATURE MORTAR
RUDOMAL 1100



HIGH TEMPERATURE SEALER DAN BRAVEN



FIBREGLASS MESH AND CORNERS



VERMICULITE LINING



HURDIS BOARDS



BRULA RENDER



SKAMOTEC 225



AKUMOL REFRACTORY BRICKS



SKAMOLEX EASY MIX RENDER



SKAMOLEX GLUE



SKAMOLEX GLUE FL06



GRID LUFT VENTS




MAISON
— FIREPLACES —

